



BUILDING OUR FOREVER HOME

**KAPPA SIGMA FRATERNITY AT LOUISIANA TECH UNIVERSITY
EPSILON GAMMA CHAPTER**



GREAT OPPORTUNITY

Whatever the address, the Epsilon Gamma Chapter House has been a home away from home for hundreds of young men—a classroom where our brothers have developed as leaders inspired by the values of Kappa Sigma. Our home is a rallying place for our alumni to gather on Bulldog football weekends to rekindle the bonds of brotherhood and share stories with the next generation.

Since Epsilon Gamma returned to campus in 2002, we have sought a permanent Kappa Sigma home. Thanks to the generosity of alumni, the house we used for the past decade was a good bridge to our exciting future. Today, with alumni engagement, resources, and knowledge, we have a transcendent opportunity to improve our home and position Kappa Sigma to be leaders within the Louisiana Tech community for years to come.

Young people need the fraternity experience more than ever to learn, grow, and develop friends that will support them long after graduation. It is our duty as alumni to provide a safe, modern, and competitive facility that attracts and retains the quality of men Epsilon Gamma has been known for the past 80 years.



EPSILON GAMMA TODAY



FOCUS ON PHILANTHROPY

- The Epsilon Gamma Chapter has dedicated time and financial resources to D.A.R.T., in partnership with St. Jude, in part to support an active brother with stage 4 Burkitt's leukemia.
- **Service hours**
 - Each brother serves an average of 25 hours.
- **Philanthropy**
 - Raised \$70,000 at Radiothon for D.A.R.T. for 2019.
 - Raised \$1,800 for A Greater Cause.
 - Raised \$1,100 for the Alonzo Day of Giving Scholarship Fund.



AWARDS AND ACHIEVEMENTS

- **National awards**
 - Kappa Sigma Champion Quest
 - Top 25 Recruiting Chapters
- **Campus awards**
 - Greek Man of the Year Nominees
 - Most Improved Fraternity GPA



ON-CAMPUS INVOLVEMENT

- Kappa Sigs are leaders in SGA, Union Board, Order of Omega, Phi Epsilon Kappa Kinesiology Honors Fraternity, Student Recruiters, Tech Leadership Council, Alpha Kappa Psi Professional Business Fraternity, American Society of Mechanical Engineers, YoungLife College, and Interfraternity Council.



SCHOLARSHIP

- More than 25% of the membership has a 3.5 GPA or better.



MEMBERSHIP

- Current active chapter – 80 brothers
- Louisiana Tech Greek life community
 - 1,500 Greek life students (12% of student population)
 - Fraternity average – 57 members



"I chose Kappa Sigma for the betterment of my life. I've met lifelong brothers and they've held me to high standards. When I wake up, they continue to be my drive to make our Chapter better each day. A new house for our Chapter would be the center point for Tech's campus and we would show it off with a great deal of pride. I may not get to enjoy the house as an active member, so it's my job to get well-rounded pledges to become actives within this brotherhood to keep our Chapter alive." – Jack Anderson '19



"Coming from Overland Park, Kan., choosing Kappa Sigma gave me a remarkably great path to not only excel in school but be involved in the Ruston community. As a senior I can definitively say I would have been lost in college without this opportunity."

– Caleb Ash '17



For ten years until spring 2020, Epsilon Gamma was located at 2604 W. Barnett Springs Avenue—a mile from campus. This distance kept members from living in the house and prevented brothers from gathering easily.

We know it is critical for Kappa Sigma to improve our footing to remain competitive among the other great fraternities at Louisiana Tech. Sigma Nu will begin construction on its new house this year. If we stand pat, we will lose potential new members to other houses and will not be able to maintain the standard of excellence that is the hallmark of Kappa Sigma.

The university approach is changing; more students are living off campus and using online instruction. We can all appreciate the value of in-person socialization now! The development of friendships and social skills are more important than ever. We know the fraternity provides social interaction that sets our members apart from the average Tech graduate.

In many ways, our Chapter House is potentially more impactful than any classroom. We want Kappa Sigma to provide the best facility to ensure these lifelong bonds are made.

"As a freshman, rush was not on my agenda, but I soon saw Kappa Sigma had something different than the other fraternities. Being the active Grand Procurator is one of the proudest moments of my life. This year's executive committee is the most levelheaded and hardest-working group of men I have ever met. We will better this Fraternity with every step we put forward."

– Cole Garrett '18



Residential facilities are the second most important factor in the college decision-making process behind the availability of a student's intended major. This is understandable considering that students spend 70% of their time within their living environment.

GOALS

- 1 Pay off the new land purchase.
- 2 Construct the new Kappa Sigma Chapter House.
- 3 Execute a plan for continued facility management and alumni engagement.

PROJECT HIGHLIGHTS

- First Floor – 3,635 Square Feet
 - Television Lounge
 - Dining Room
 - Chapter Room
 - Ritual Storage
 - Serving Kitchen
 - Multiple Study and Conference Rooms
- Second Floor – 3,065 Square Feet
 - 10 Single Sleeping Rooms
 - Community Bath
 - Laundry

PROJECT COST

Land Cost	\$625,000
Building Cost	\$1,900,000

Total Project Cost **\$2,525,000**

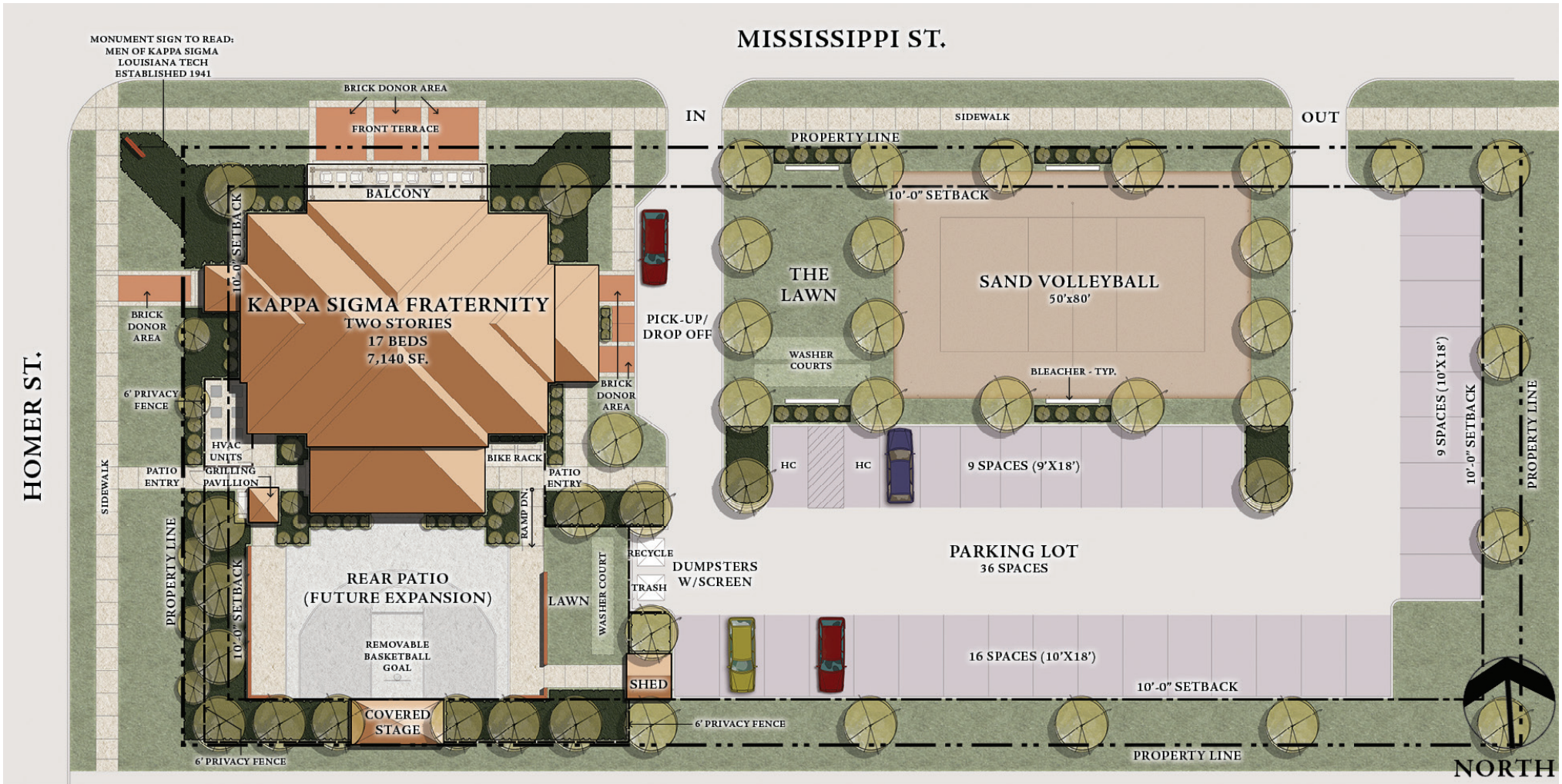
OUR DREAM FOR EPSILON GAMMA

The Epsilon Gamma alumni leadership has worked with TreanorHL Architects—a firm with extensive Greek housing experience—to design the house we’ve always dreamed of. Additionally, the house corporation has developed facility management plans to ensure our Forever Home is well maintained.

We remember the house as a place to congregate between classes—to study, socialize, and develop lasting friendships. Our new Forever Home will be on campus and will provide space for our undergraduate brothers to come together and further the bonds of brotherhood, like the days of old. We have one shot at providing the most competitive facility on campus for attracting quality young men.



SITE PLAN



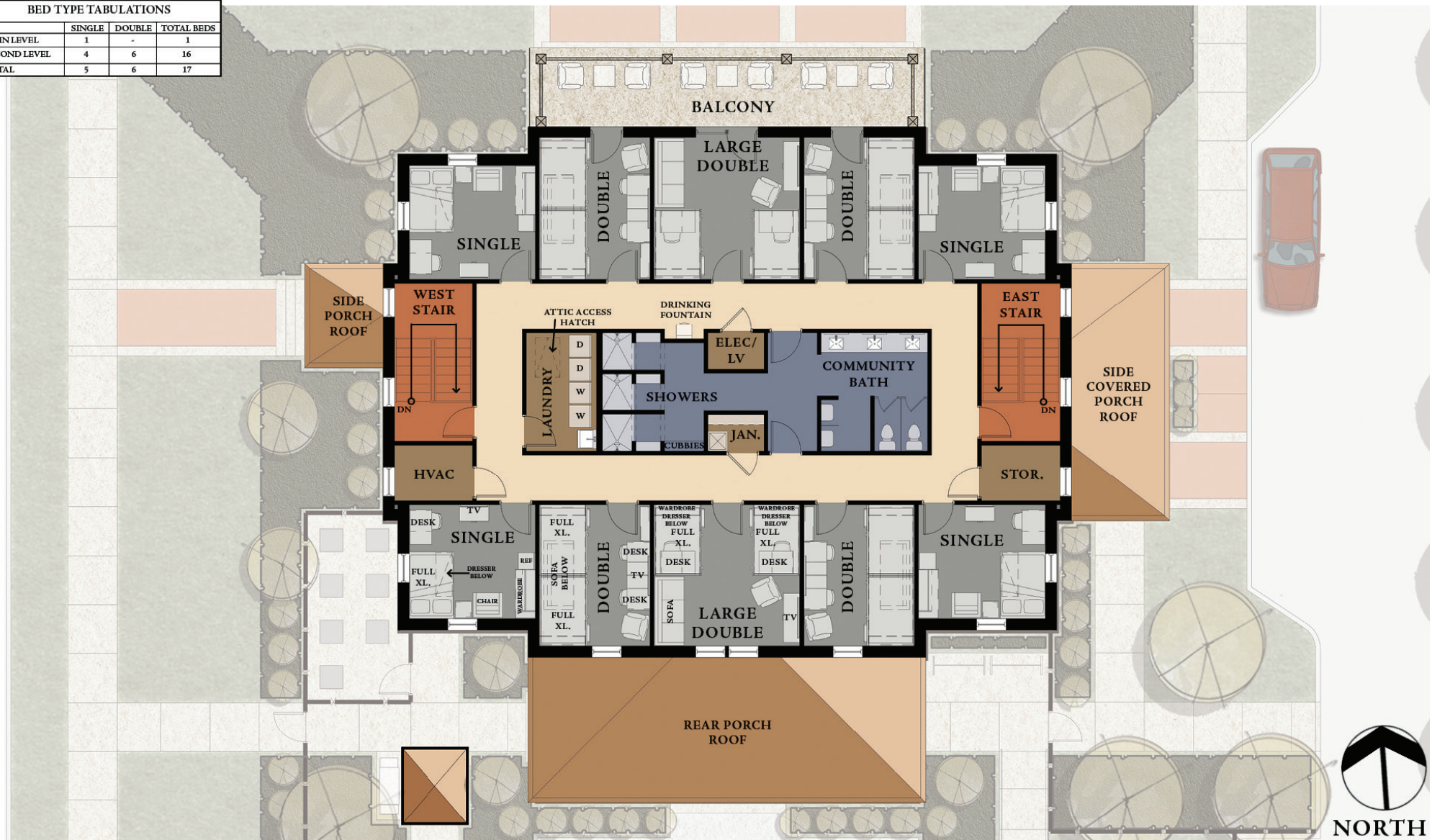
MAIN LEVEL

AREA CALCULATIONS	
MAIN	3,570 SF
SECOND	3,570 SF
TOTAL HEATED	7,140 SF



SECOND LEVEL

BED TYPE TABULATIONS			
	SINGLE	DOUBLE	TOTAL BEDS
MAIN LEVEL	1	-	1
SECOND LEVEL	4	6	16
TOTAL	5	6	17



PROTECTING OUR INVESTMENT

During this project's exploratory conversations, many alumni asked how we would ensure the house was maintained. We remember how rough we were on the house when we were in school. While times have changed, a high-traffic facility like this requires a proactive maintenance schedule. We know alumni do not want to give money to construct a Chapter House unless there are assurances that policies and procedures are in place and enforced to protect their investment in Epsilon Gamma. The house corporation has developed a facility management program unlike anything we've had before.

- Epsilon Gamma will have a premium facility, and we plan to charge a premium rent to live there.
- A non-refundable capital improvement fee for all live-in members will be charged and used only for capital replacement needs such as carpet, furnishings, fixtures, or equipment.
- A parlor fee will be charged to all non-resident members to help cover the costs of wear and tear and maintenance of the facility.
- Contracts and security deposits will be collected from each undergraduate before he is permitted to move into the Chapter House.
- Check-in and checkout procedures will be implemented for the beginning and end of each semester/academic year.

TWELFTH GATE FOUNDATION INC. BOARD

President
Jerry Lorey '92

Treasurer
Scott Hill '88

**Vice President and
Secretary**
Brad Powell '92

Board Members
Ty Bromell '88
Coy Cockrell '03
Keith Moffit '03



LOUISIANA TECH
UNIVERSITY

OFFICE OF THE PRESIDENT

Kappa Sigma Fraternity
Epsilon Gamma Chapter

Dear Alumni of Kappa Sigma,

I am excited to see the Twelfth Gate Foundation's plans for a new chapter house. Our campus and the Ruston community is enjoying tremendous growth, and your new Forever Home will raise the standard for fraternity living at Louisiana Tech.

This past year and all its challenges have underscored the value of student engagement and social interaction. It is vitally important for the health and wellness of our students that we offer premier living facilities.

Greek life gives Louisiana Tech students opportunities for leadership development, scholastic support, and social growth. Because so much of this development happens inside the Greek chapter houses, your investment will have significant impacts on student success.

Our fraternity and sororities have created some of the University's most loyal alumni. But a good alumnus is borne through a transformative undergraduate experience. Your new chapter house will be a living and learning community that will strengthen Kappa Sigma and Louisiana Tech University.

I congratulate you on this endeavor and thank you for your continued support of our University.

Go Bulldogs!

Sincerely,


Dr. Les Guice
President

A MEMBER OF THE UNIVERSITY OF LOUISIANA SYSTEM

P.O. BOX 3168 • RUSTON, LA 71272-0001 • TEL: (318) 257-3785 • FAX: (318) 257-2928
AN EQUAL OPPORTUNITY UNIVERSITY

OUR TIME IS NOW

Students need the leadership opportunities and interaction that Kappa Sigma provides. This will be especially true when our campus social life returns to normal. A generation of young people is learning how essential social connection is to the human experience, and fraternities will meet that need for future students.

The Twelfth Gate Foundation envisions a future that sets a new standard at Louisiana Tech, surpassing the expectations of members and their families. We want to be the beacon of excellence among all Louisiana Tech fraternities, offering a space for the development of leadership and social skills and high academic achievement.

We will achieve this goal with your support. We have benefited greatly from the relationships and skills forged through our Kappa Sigma experience. It is our duty as alumni to ensure this opportunity for future generations.



MAKE A LASTING IMPACT

- Gifts can be spread over a five-year pledge period.
- Give online via credit card or bank withdraw at tinyurl.com/KappaSigForeverHome.
- A monthly gift of \$42 (over five years) will be recognized with a brick in our Forever Home.
- Our fund with the Louisiana Tech University Foundation is available for gifts of stock or other appreciated securities and for donors with corporate matching gift programs.
- Naming opportunities are available for gifts starting at \$25,000.

ARE WE SURE NOW IS THE RIGHT TIME?

We recognize the pandemic has affected our alumni in different ways. But we cannot plan for our campaign to align with the right market. To that point, a 2020 survey of more than 125,000 Greek alumni demonstrated high confidence in donor willingness to maintain their contributions at levels comparable to the 2015 survey.



