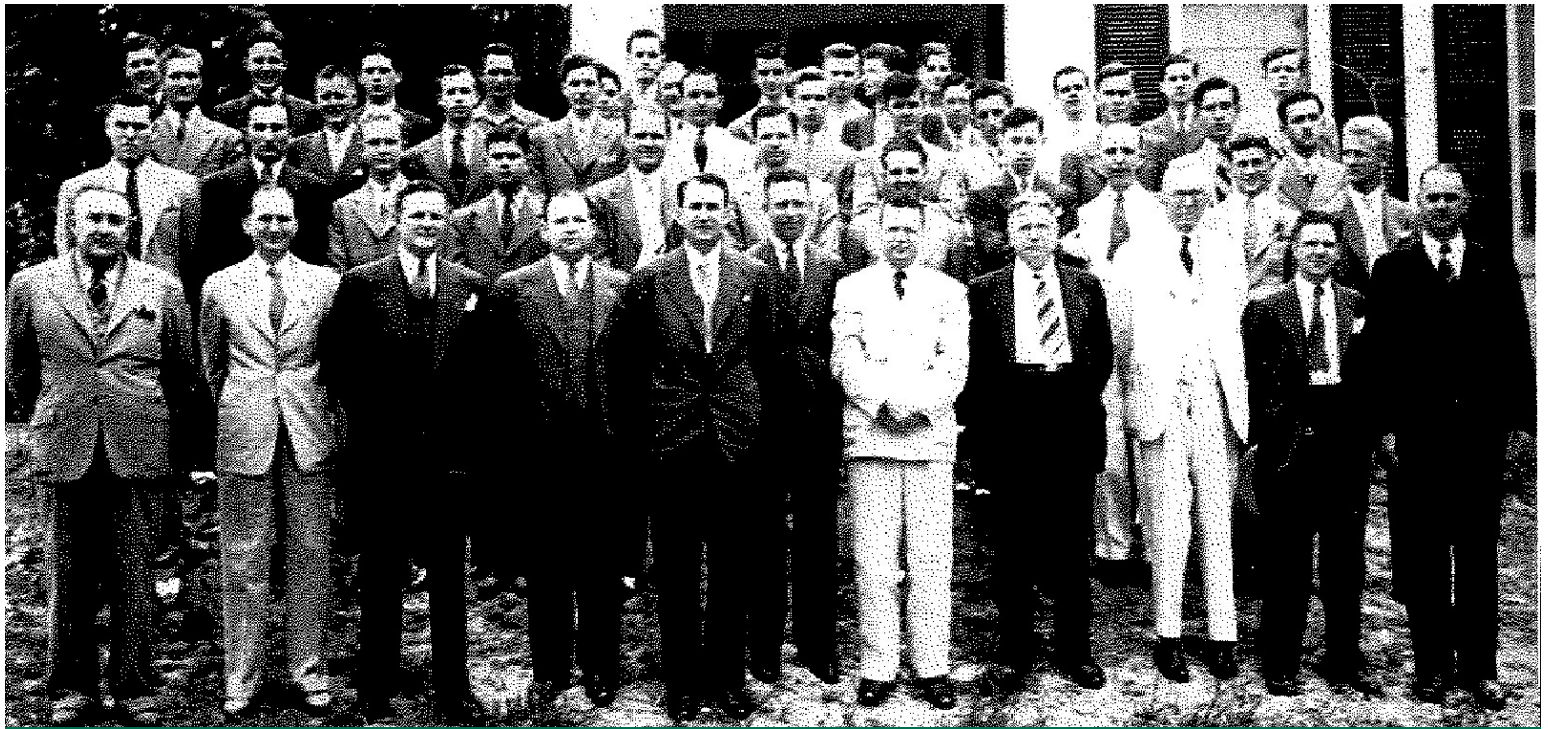


KAPPA SIGMA FRATERNITY

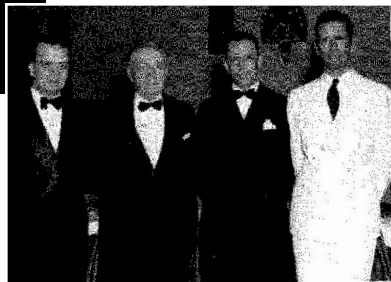
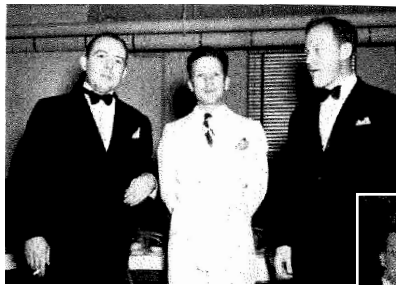
EPSILON GAMMA CHAPTER



LOUISIANA TECH UNIVERSITY



THE STORY OF THE EPSILON GAMMA CHAPTER OF KAPPA SIGMA



As we approach our chapter's 80th anniversary, we reflect on how Epsilon Gamma has grown with Ruston, Louisiana Tech University, and the Greek community.

Our brotherhood is deeply grounded in the Kappa Sigma values of fellowship, leadership, scholarship, and service. This foundation has given our alumni the tools for personal and professional success and helped us maintain special, lifelong friendships that we would not have forged anywhere else.

Since Epsilon Gamma returned to campus in 2002, we have sought a permanent Kappa Sigma home. Thanks to the generosity of alumni, our current home has met our needs and provided a location to maintain our fellowship for the past decade. Today, with additional alumni support, engagement, resources, and knowledge, we have a transcendent opportunity to improve our home and position Kappa Sigma to be leaders within the Louisiana Tech community well into the future.

Whatever the address, the Epsilon Gamma Chapter house has been a home away from home for hundreds of young men, a classroom where our brothers have learned to develop as leaders inspired by the values of Kappa Sigma. If we wish for Kappa Sigma to continue its strong presence at Louisiana Tech, we must ensure we are providing a safe, modern, and competitive facility that more of our brothers can experience.





EPSILON GAMMA TODAY

Focus on Philanthropy

The Epsilon Gamma Chapter has dedicated their time and financial resources to D.A.R.T., in partnership with St. Jude, in part to support an active brother who currently has stage 4 Burkitt's Leukemia.

- Service Hours
 - Each brother serves an average of 25.45 hours
- Philanthropy
 - Raised \$70,000 at Radiothon for D.A.R.T. for 2019
 - \$1,800 for A Greater Cause
 - \$1,100 for Alonzo Day of Giving Scholarship Fund

Awards & Achievements

- National Awards
 - Kappa Sigma Champion Quest
 - Top 25 Recruiting Chapters
- Campus Awards
 - Greek Man of the Year Nominees
 - Most Improved Fraternity GPA

On-Campus Involvement

- Kappa Sigs are leaders in SGA, Union Board, Order of Omega, Phi Epsilon Kappa Kinesiology Honors Fraternity, Student Recruiters, Tech Leadership Council, Alpha Kappa Psi Professional Business Fraternity, American Society of Mechanical Engineers, YoungLife College, Interfraternity Council

Scholarship

- Over 25% of membership has a 3.5 GPA or better
- 4.0 GPA Winter Quarter 2020 - Cole Albritton, Andrew Atkins, Rylan Burlison, Garrison Lowder, Ryan Price

Membership

- Fall 2019 – pledged 43, initiated 32
- Current active chapter – 80 brothers

Louisiana Tech Greek Life Community

- 1,500 Greek Life students (12% of total student population)
- Fraternity average members = 57



OUR CHALLENGES AND NEEDS



The Kappa Sigma experience is more than the fraternity house, and the undergraduates continue to be successful, but the time has come that our home meet the expectations and provide the experience we want for our brotherhood.

OUR HOME

Epsilon Gamma has been located at 2604 W. Barnett Springs Ave. for the past 10 years. **The house is over a mile from campus;** this inconvenience is another factor drawing members from living in the house and preventing brothers from coming together.

Residential facilities are the second most important factor in the college decision-making process behind the availability of a student's intended major. This is understandable considering that students spend 70% of their time within their living environment.

We know it is critical for Kappa Sig to improve our footing to remain competitive among the other great fraternities at Louisiana Tech. **If we stand pat,** we will lose potential new members to other houses and not be able to maintain the standard of excellence that is the hallmark of Kappa Sigma.

FELLOWSHIP

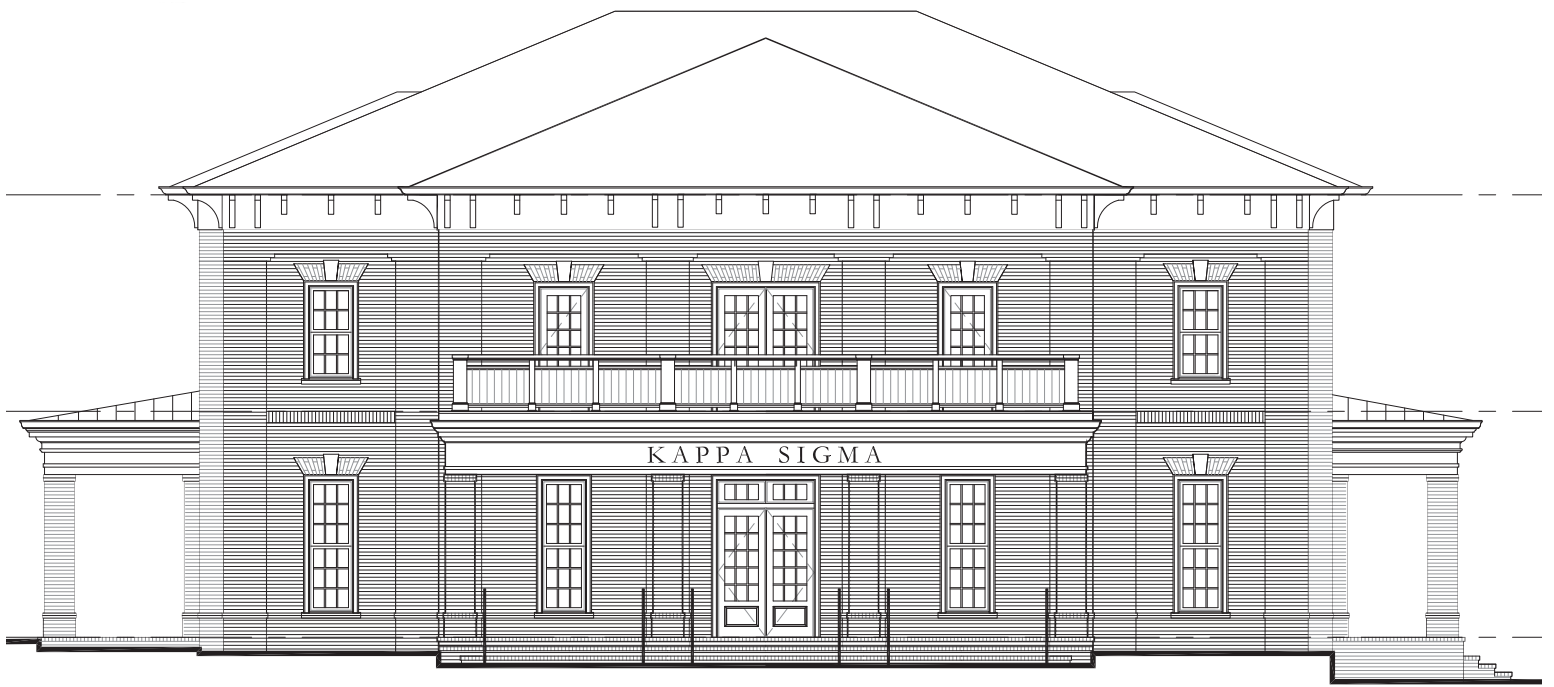
The university approach is changing; more students are living off campus and utilizing online instruction. Because of this, the development of friendship and social skills is more important than ever. We know the fraternity provides social interaction that sets our members apart from the average college graduate. In many ways, our new home is potentially more impactful than any classroom. We want Kappa Sigma to be providing the best facility to ensure these lifelong bonds are made.

HERE AND NOW

The Epsilon Gamma alumni leadership has engaged Pennington & Company on a preliminary basis to help us evaluate our likelihood of initiating a multimillion-dollar campaign with alumni support. Having ample experience in the execution of campaigns both at Louisiana Tech and across the nation, Pennington has led more than 300 major campaigns and raised over \$750 million in support of Greek life. With such a pivotal decision, we must take seriously the responsibility we all hold in defining the future of our fraternity.

Our challenge is to **provide a quality living environment** that supports and nurtures young men and will have a far-reaching effect on the lives of our Kappa Sigma brothers for years to come.





OUR DREAM FOR EPSILON GAMMA

The Epsilon Gamma alumni leadership has identified areas of need and opportunities for our chapter. The board has worked with TreanorHL Architects—a firm with extensive Greek housing experience. These plans address facility management and will enhance and modernize the conditions of our house, while maintaining the integrity of our structure.

Many of us recall the brotherhood developed at the house. Our old house provided us a location to congregate between classes, a place to study, socialize and develop lasting friendship. Our new fraternity house, which will be on campus, will provide space for our undergraduate brothers to come together and further the bonds of brotherhood, like the days of old. This project will provide the most competitive facility on campus for attracting quality young men.

GOALS

1. Pay off the new land purchase
2. Construct the new Kappa Sigma fraternity house
3. Develop a plan for continued alumni engagement and support

PROJECT HIGHLIGHTS

Old House

- Distance from campus – 1.5 miles
 - Occupancy – 6 beds, 2 residents
 - 1 Shared Bathroom
 - No Air Conditioning
- Total square footage ~3,500

Future House

First Floor – 3,570 Square Feet

- Television Lounge
- Dining Room
- Chapter Room
- Ritual Storage
- Serving Kitchen
- Multiple Study and Conference Rooms

Second Floor – 3,570 Square Feet

- Sleeping capacity of 17 with single and double rooms
- Community Bath
- Laundry

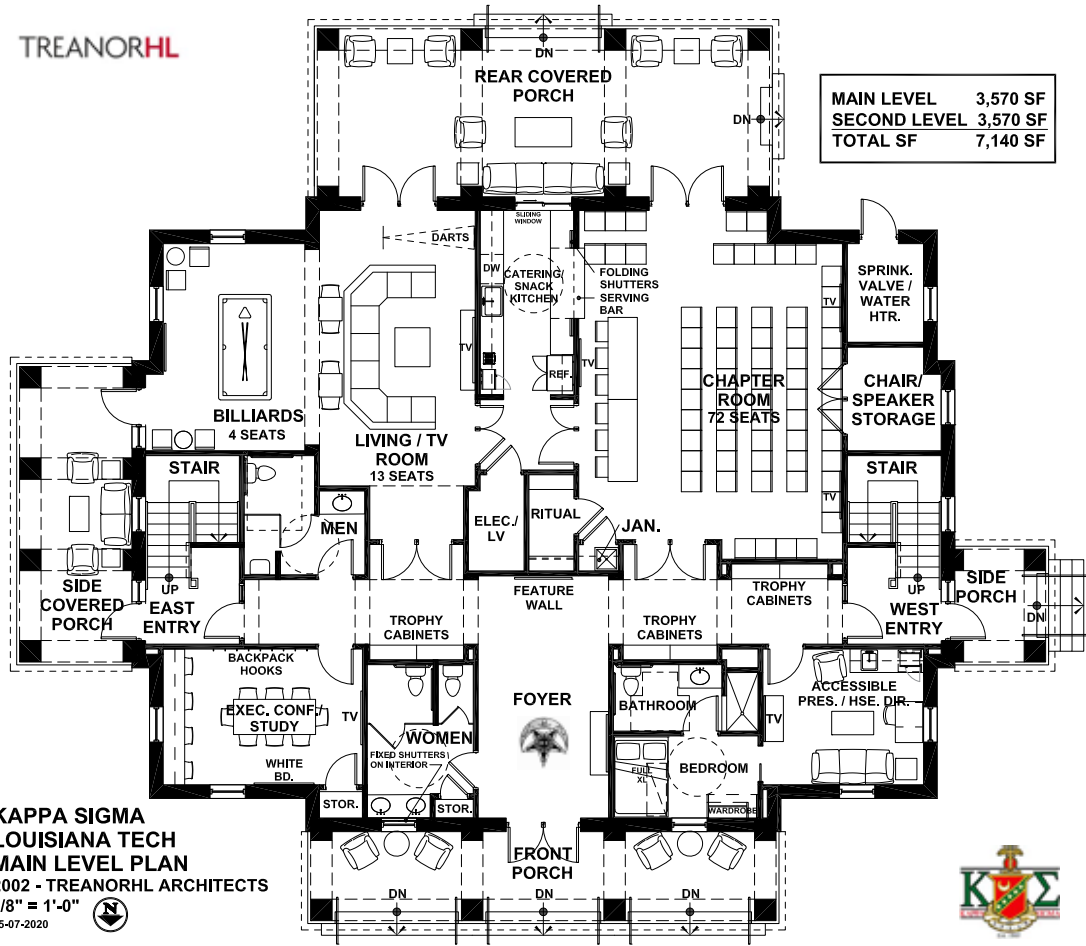
Total square footage 7,140

Estimated Construction Cost
\$2.8 million



“For years, we have talked about ways to improve Epsilon Gamma Chapter, but we have never taken action. With this land purchase and a chapter full of high-achieving undergraduates, now is the time to act. I’m excited to share this concept with my fellow alumni. This is about securing a better future for a place that belongs to all of us. More than anything else, it’s time for big thinking at Epsilon Gamma.” - Brad Powell '92





MAIN LEVEL	3,570 SF
SECOND LEVEL	3,570 SF
TOTAL SF	7,140 SF

**KAPPA SIGMA
LOUISIANA TECH
MAIN LEVEL PLAN**
2002 - TREANORHL ARCHITECTS
1/8" = 1'-0" 
05-07-2020



BED COUNT	
MAIN LEVEL	1 BED
SECOND LEVEL	16 BEDS
TOTAL BEDS	17 BEDS

**KAPPA SIGMA
LOUISIANA TECH
SECOND LEVEL PLAN**
2002 - TREANORHL ARCHITECTS
1/8" = 1'-0" 
05-07-2020





ACHIEVING OUR VISION FOR EPSILON GAMMA

Everything in American life is changing rapidly right now. Phrases like social distancing and new normal have quickly become a part of the vernacular. Perhaps more than ever, young people will need the leadership opportunities and social interaction that Kappa Sigma provides when they return to campus. A generation of young people is learning how essential social connection is to the human experience.

The Twelfth Gate Foundation envisions a future that sets a new standard at Louisiana Tech, surpassing the expectations of members and their families. We want to be the beacon of excellence among all Louisiana Tech fraternities offering a space for the development of leadership and social skills and high academic achievement. As currently configured and occupied, only a few members benefit from the chapter house. We must provide more brothers the enriching experience of living in a safe, secure, and state-of-the-art Kappa Sigma house.

This stage of our project requires assistance from a highly selective group of alumni—like you. We are working to identify brothers who have both the ability and interest to provide major assistance to the project. Remember that each of us benefited from the generosity, work, and sacrifice of those who went before us. We all enjoyed the brotherhood Kappa Sigma provided during our years at Louisiana Tech. **Now it is our turn to support Epsilon Gamma and ensure that the same, wonderful experience is available to others.**

We are eager for your input during this important planning process. With your support, Kappa Sigma will provide a living environment that supports, nurtures, and develops outstanding young men with the skills and confidence to face an ever-changing world. The commitment we make today cannot be underestimated—it will have a far-reaching effect on the lives of our brothers for years to come.




HOUSE CORPORATION

- Jerry Lorey '92, President
- Brad Powell '92, Vice President and Secretary
- Scott Hill '88, Treasurer
- Ty Bromell '88
- Coy Cockrell '03



OUR PATH TO SUCCESS

Pennington & Company's experience with over 800 collegiate organizations shows that the top 10 gifts usually make up half of a successful capital campaign, while the top 20% of donors will make up 80% of the funds contributed. This gift chart provides an overview of the gifts needed for a campaign of this magnitude to be successful.

	GIFTS NEEDED	GIFT SIZE	PER YEAR (5 YEARS)	RANGE TOTAL
TOP 80%	LEADERSHIP GIFTS			
	1	\$500,000	\$100,000	\$500,000
	2	\$250,000	\$50,000	\$500,000
	3	\$100,000	\$20,000	\$300,000
	4	\$50,000	\$10,000	\$200,000
	PACE-SETTING GIFTS			
	10	\$25,000	\$5,000	\$250,000
	15	\$15,000	\$3,000	\$225,000
	40	\$10,000	\$2,000	\$400,000
	80	\$5,000	\$1,000	\$400,000
20%	PUBLIC PHASE GIFTS			
	200	Up to \$2,500	Varies	\$225,000
TOTAL GIFTS		CUMULATIVE TOTAL		
355		\$3,000,000		
	GOAL	\$3,000,000		
	TOTAL ACTIVE ALUMNI	1,701		
	TOTAL LOST ALUMNI	87		
	PROJECTED ALUMNI PARTICIPATION	21%		





KAPPA SIGMA FRATERNITY
EPSILON GAMMA CHAPTER
LOUISIANA TECH UNIVERSITY